

# B2368 Quick Start Guide

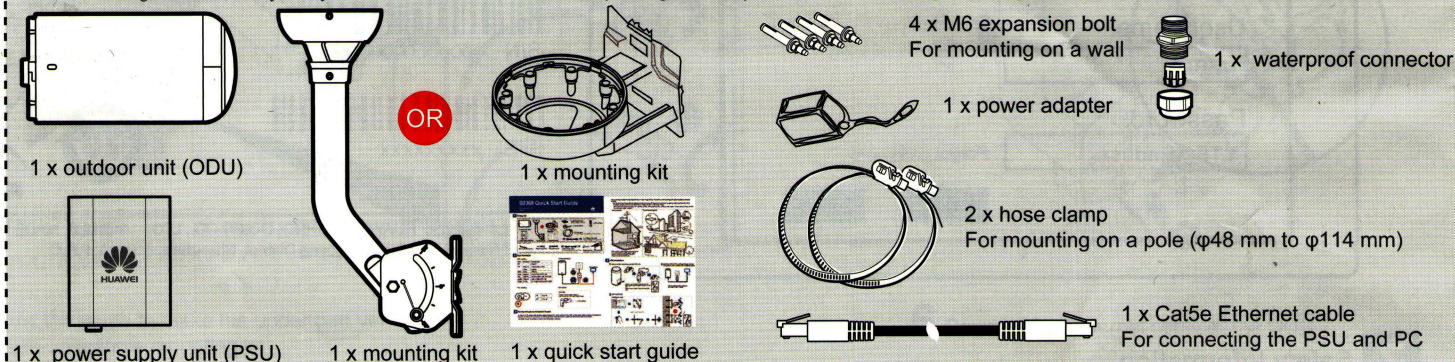
Part Number: 31071141

Issue: 01

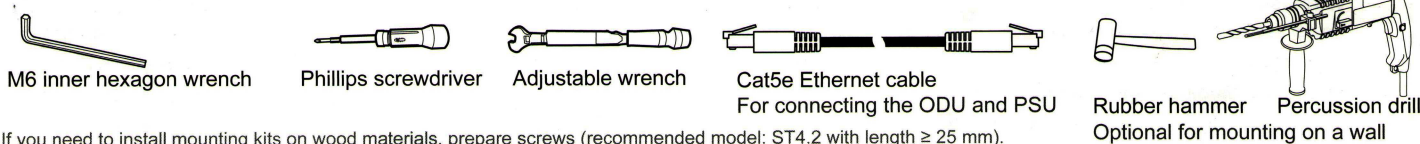


## 1 Packing List

Before installing the CPE, verify that you have all the items listed in the packing list. If any of the items is missing or damaged, contact your LTE device provider.



Prepare the following tools:



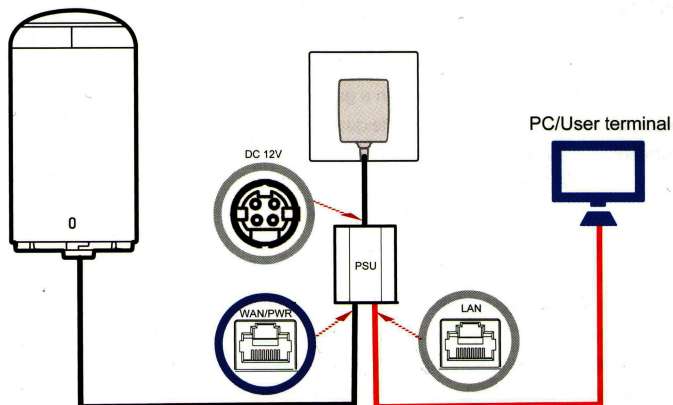
If you need to install mounting kits on wood materials, prepare screws (recommended model: ST4.2 with length  $\geq 25$  mm).

## 2 Basic Information

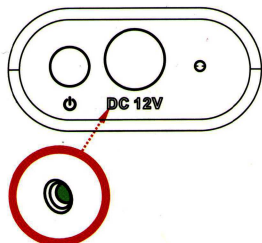
### ODU indicators

Color	LED Behavior	Status Indication
Off		Power off
Red	Steady ON	Error, malfunction, or no SIM
	Blinking	Upgrading
Green	Blinking	Booting up
Green	Steady ON	Strong LTE signal: $\text{SINR} \geq 10\text{dB}$
Blue	Steady ON	Medium LTE signal: $4\text{dB} \leq \text{SINR} < 10\text{dB}$
Orange	Steady ON	Weak LTE signal: $\text{SINR} < 4\text{dB}$
Orange	Blinking	No LTE signal, searching, or disconnected

### Cable connections



### PSU indicators

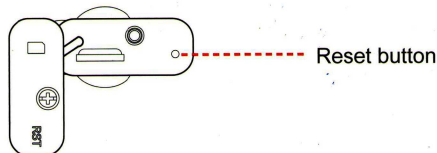


ON	Power on
OFF	Power off

### ODU buttons

Reset button:

Press for 3s to 10s to reboot the device.  
Press for more than 10s to restore factory settings.



## 3 Working Principle and Installation Location

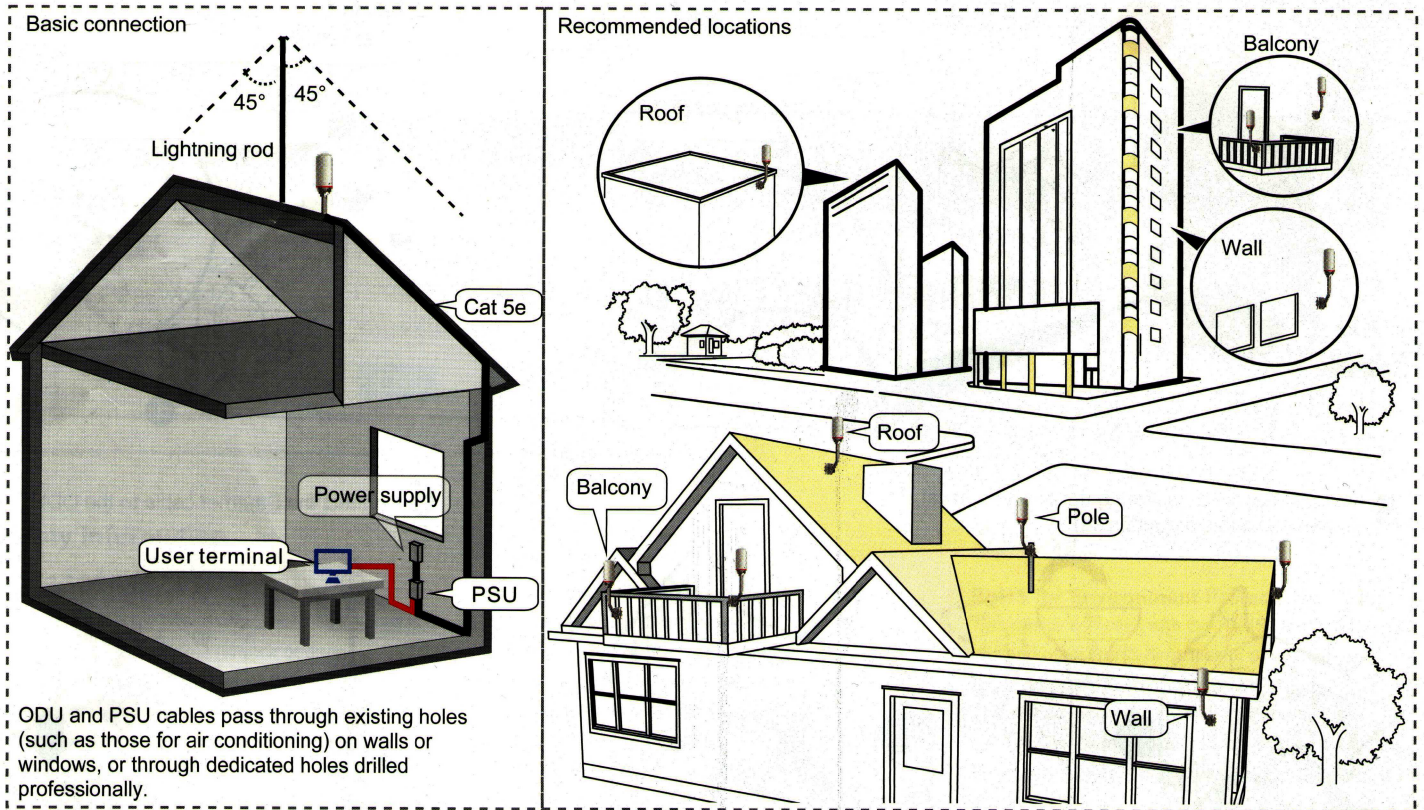
An ODU is an LTE wireless signal reception and transmission unit. You are advised to install ODUs in open areas without obstacles on suitable walls, balconies, or rooftops. You can power on an ODU to test signal quality and choose a location with better signal quality for installation.

The B2368 ODU can be installed on a wall or pole (horizontally or vertically).



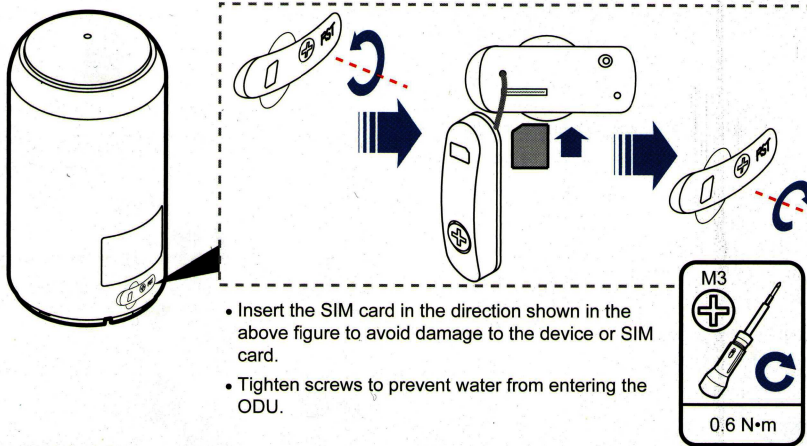
You do not need to adjust the ODU angle thanks to its unique design. Pay attention to the following points when selecting an installation location:

- An ODU must be installed within the lightning rod protection scope (45 degrees) to avoid being damaged by a lightning strike. If an ODU is installed on a rooftop, the ODU must be placed at a height less than 2 m above the rooftop.
- ODU performance varies according to the installation position and nearby obstacles, especially metal objects. You are advised to install an ODU in an open area without obstacles.

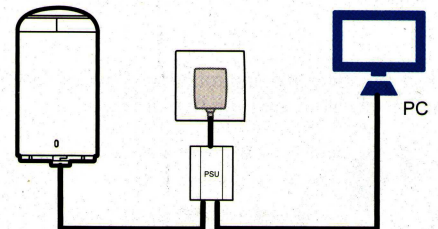


## 4 ODU Installation

1 Take out the ODU and insert a micro-SIM (3FF) card.

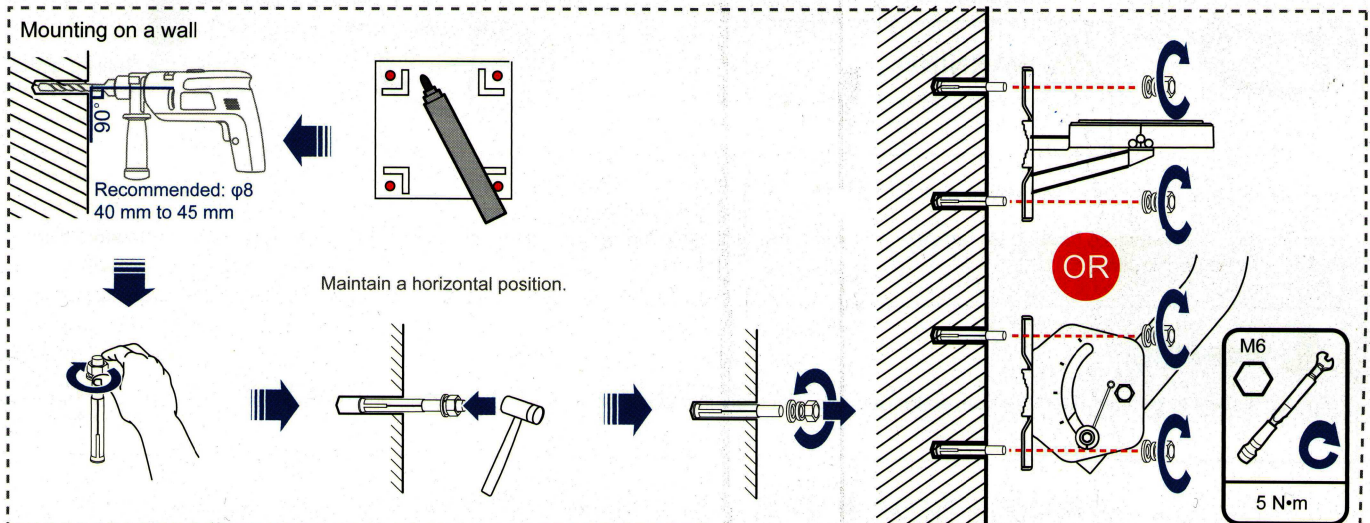


2 Connect the ODU to the PSU and power adapter, and test LTE signals to select a suitable ODU installation location.

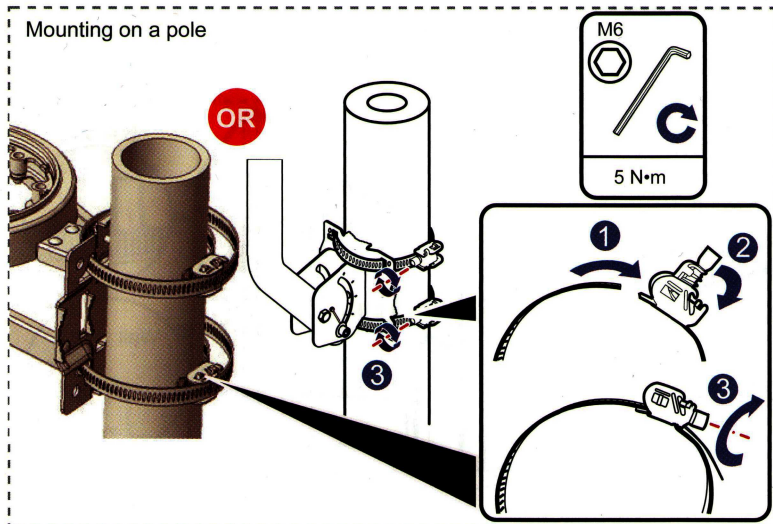


After an installation location is selected, disconnect the ODU and cables.

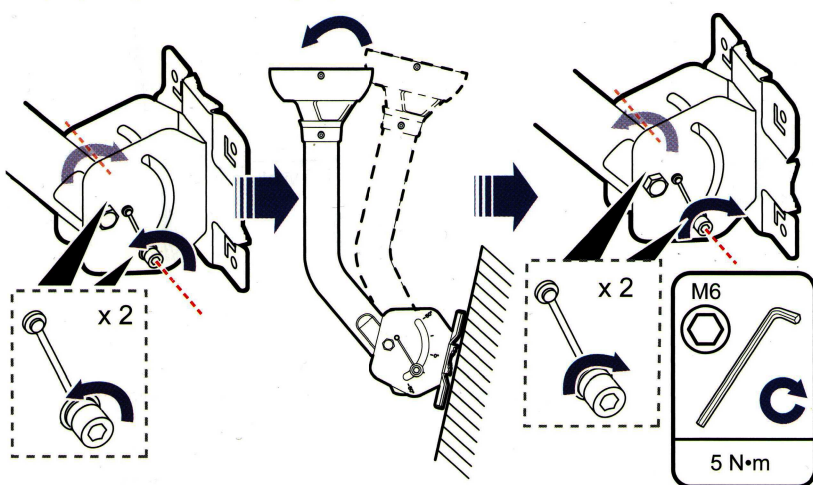
3 Install mounting kits.



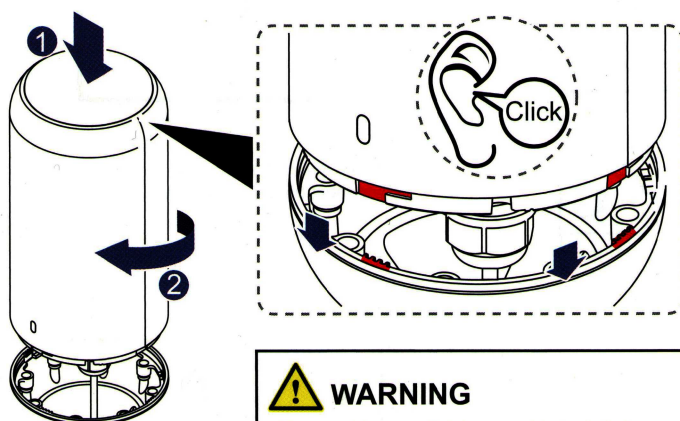




- 5 Adjust the angle to make the upper part vertical.  
(Angle-adjustable mounting kit)



- 7 Align mounting kits and rotate the device clockwise in the arrow direction until it fully stops and you hear a click.



**WARNING**

You must hear a click to complete installation avoiding shedding or damaging the equipment.

- 8 Connect ODU and PSU cables and power on the ODU.

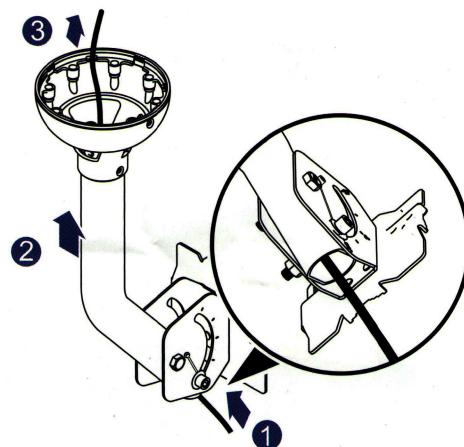
Power on the ODU within 24 hours after unpacking. If you power off the ODU, power it on again within 24 hours to help prevent moisture from condensing, affecting device performance.



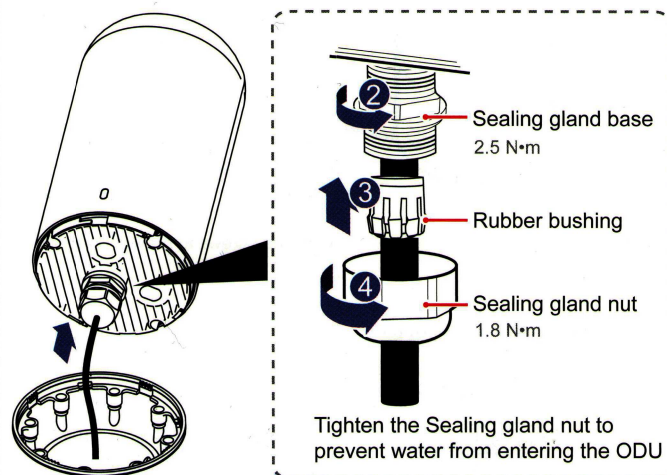
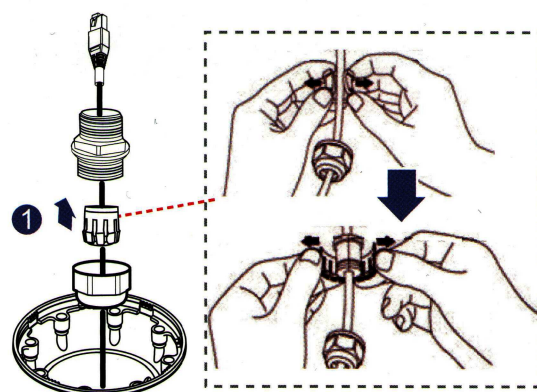
**WARNING**

Tighten screws to prevent the ODU from water damage. Securely install the ODU to avoid shedding and damage to human bodies or the device.

- 4 Route an Ethernet cable through the mounting kit.  
(Angle-adjustable mounting kit)



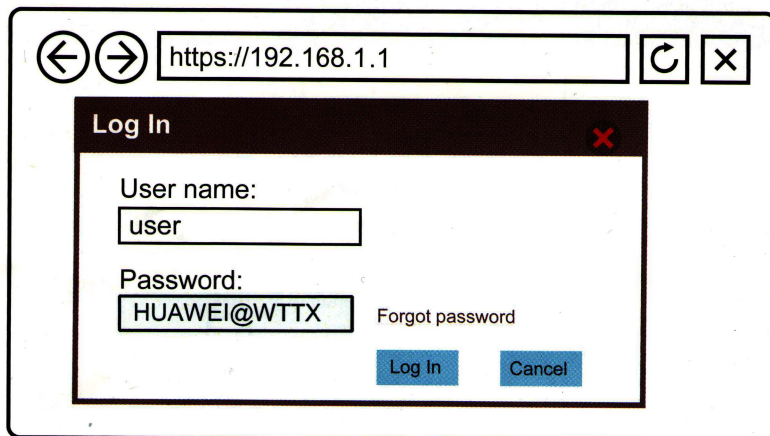
- 6 Connect the Ethernet cable to the ODU.





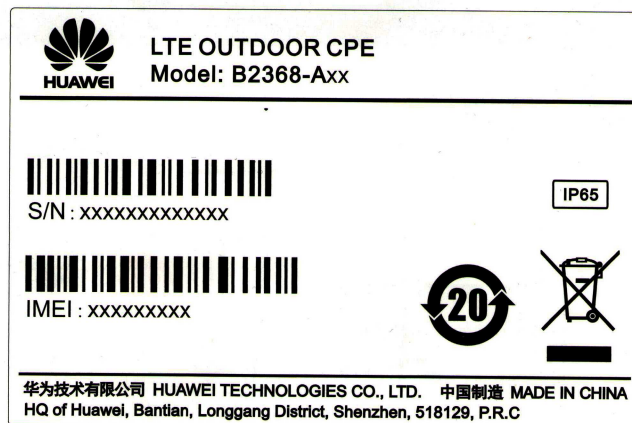
## 5 (Optional) CPE Configuration

Log in to the CPE using a PC.  
If you need to change CPE configurations, log in to the device website using a web browser on a PC.



## 6 Device Label

Check the device label on the back of the ODU.



## 7 Safety Information

### Wireless Devices

Do not use the device where using wireless devices is prohibited or may cause interference or danger.

### Impact on Medical Equipment

Radio waves generated by the device may interfere with the operation of electronic medical appliances. If such appliances are used, consult the manufacturer about the restrictions for using the device.

Do not take the device into operating rooms, intensive care units (ICUs), or coronary care units (CCUs).

### Areas with Inflammables and Explosives

Do not use the device where inflammables or explosives are stored, for example, in a gas station, oil depot, or chemical plant. Follow the textual or symbolic instructions in these areas. Otherwise, explosions or fires may occur.

Do not store or transport the device in containers with flammable liquids, gases, or explosives.

### Children Safety

Keep the device and its accessories out of the reach of children.  
Do not allow children to play with the device and its accessories to avoid dangers such as suffocation or choking.

### Accessory Requirements

NOTE: The accessories of the device include the power adapter and mounting kits.  
Using an unapproved or incompatible accessory may cause fires, explosions or other hazards.  
Use only the accessories supplied or authorized by the device manufacturer. The use of any other types of accessories may affect the device performance, void the warranty, violate local regulations and laws, and may be dangerous.  
Do not use the power adapter if its cable is damaged. Otherwise, electric shocks or fires may occur.  
Ensure that the power adapter meets the specifications indicated on its nameplate.

### Operating Environment

Use the ODU at an ambient temperature of  $-40^{\circ}\text{C}$  to  $50^{\circ}\text{C}$ . An overly high or low ambient temperature may cause device faults.  
Use the device at a humidity of 5% to 95%. An overly high or low ambient humidity may cause device faults.

- Do not install the device in areas exposed to acidic, alkaline, or other corrosive gases.
- Keep the device far from electronic appliances that generate strong magnetic or electric fields, such as a microwave oven or a refrigerator.
- Keep the device far from sources of heat and fire, such as a heater, candle, or microwave oven.
- Do not place any object (such as a candle or a water container) on the device to avoid risks caused by liquid leakage. If any foreign object or liquid enters the device, stop using the device immediately, power it off, remove all the connected cables, and then contact an authorized service center.
- Do not cover the device surface to ensure normal service operation.
- Keep the device stable to avoid personal injury or device damage.
- Do not trample, pull, or excessively bend any cable. Doing so may damage the cable, causing the device to malfunction.
- Do not use damaged or aged cables.
- Without authorization, no organization or individual can change the mechanical, safety, or performance design of the device.
- When using the CPE, observe all applicable laws and regulations and respect the legal rights of other people.

### Cleaning and Maintenance

- If smoke, noise, or odor is emitted from the device, stop using and power off the device immediately, and remove the power plug and connected cables. Contact the service provider for repair.
- Before you clean or maintain the device, stop using it, stop all applications, and disconnect all cables connected to it.
- Use a clean, soft, and dry cloth to clean the device shell. Do not use any chemical detergent, powder, or other chemical agents to clean the device.

### Environmental Protection

- Do not dispose of the device and its accessories (if included) in a garbage can.
- Dispose of the device according to the local regulations on disposing of packing materials and abandoned devices. Proper collection and recycling are allowed.

### RoHS for Environment Protection

This device complies with the RoHS Directive 2011/65 /EU and other RoHS directives in other countries.

### RF Exposure Information (MPE)

This device meets the EU requirements and the International Commission on Non-Ionizing Radiation Protection (ICNIRP) on the limitation of exposure of the general public to electromagnetic fields by way of health protection. This device should be installed and operated with a minimum of 20 cm spacing to any person at all times.

### Max radiated power (EIRP)

The frequency and the maximum transmit power in EU are listed below:

B2368-A01:

FDD: B1/B3/B7/B8/B20  
1920 MHz to 1980 MHz: 31 dBm E.I.R.P.  
1710 MHz to 1785 MHz: 31 dBm E.I.R.P.  
2500 MHz to 2570 MHz: 31 dBm E.I.R.P.  
880 MHz to 915 MHz: 23 dBm E.I.R.P.  
832 MHz to 862 MHz: 23 dBm E.I.R.P.  
TDD: B38/B40/B41/B42/B43  
2570 MHz to 2620 MHz: 35 dBm E.I.R.P.  
2300 MHz to 2400 MHz: 35 dBm E.I.R.P.  
2496 MHz to 2690 MHz: 35 dBm E.I.R.P.  
3400 MHz to 3600 MHz: 36 dBm E.I.R.P.  
3600 MHz to 3800 MHz: 36 dBm E.I.R.P.

This device is restricted to use due to the need for a spectrum license and/or the conditions attached to authorization for the use of frequencies within all European Union countries (BE/BG/CZ/DK/DE/EE/IE/EL/ES/FR/HR/IT/CY/LV/LT/LU/HU/MT/NL/AT/PL/PT/RO/SI/SK/FI/SE/UK/TR/NO/CH/IS/LI).